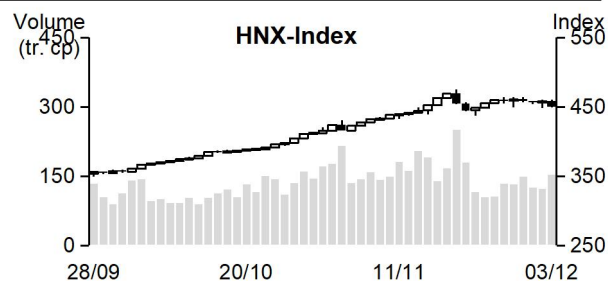
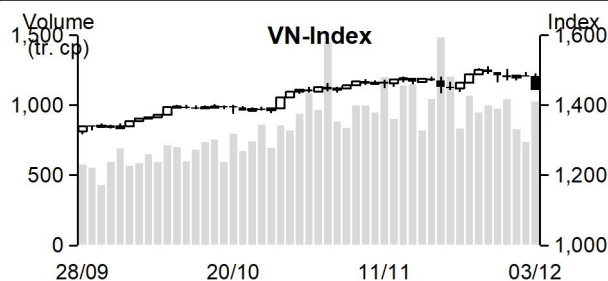


| 03/12/2021 | HOSE | | VN30 | | HNX | |
|-------------------------------------|------------------|---------------|------------------|---------------|-----------------|---------------|
| | Value | Change % | Value | Change % | Value | Change % |
| Closing rate | 1,443.32 | -2.61% | 1,503.98 | -2.39% | 449.27 | -1.96% |
| Total volume (mil. shares) | 1,094.74 | 43.50% | 242.46 | 47.05% | 159.82 | 18.89% |
| Matched volume (mil. shares) | 1,034.48 | 38.74% | 237.84 | 52.77% | 154.56 | 24.05% |
| 20-session average (mil. shares) | 1,024.45 | 0.98% | 235.03 | 1.20% | 155.13 | -0.37% |
| Total value (bil dong) | 32,705.25 | 42.87% | 11,590.60 | 44.84% | 4,163.94 | 23.81% |
| Matched value (bil dong) | 30,652.49 | 38.98% | 11,264.71 | 50.76% | 4,009.74 | 30.20% |
| 20-session average (bil dong) | 30,294.01 | 1.18% | 10,858.07 | 3.75% | 4,007.61 | 0.05% |
| | Weight % | | Weight % | | Weight % | |
| Number of gainers | 61 | 12% | 1 | 3% | 61 | 21% |
| Number of droppers | 415 | 82% | 28 | 93% | 208 | 70% |
| Stand still codes | 31 | 6% | 1 | 3% | 28 | 9% |



REMARKABLE POINTS ON THE MARKET

The market dropped negatively at the end of the week. The situation is quite unexpected as most markets in Asia gained today. Red spread widely from the morning but VN-Index could stay in light green with support from some large-cap codes like VIC and VHM and some banking codes. However, in the afternoon, VN30 pillar codes were also dumped so the market dropped strongly. Only Medical group went against the stream with another good gain with worry on the return of Covid-19. Therefore, VN-Index closed at the lowest level since early November 2021. Selling pressure increased strongly so the liquidity increased again. The market leaned completely on sellers with droppers being in control.

TECHNICAL POINT OF VIEW

In technical term, VN-Index saw another drop. The volume surpassed 10 and 20-session average, showing that the cash flow is escaping. Not just that, the index dropped with a thick dropping candle, and it closed below MA20, and -DI cut up to +DI, showing that short-term dropping trend is returning. Moreover, MACD and RSI dropped negatively and maintained selling sign, showing that the index might still see correcting pressure to support level of 1,400 – 1,422 points (old peak in July and MA50). For HNX, HNX-Index saw similar situation. It dropped to below MA20 with higher volume, showing that short-term dropping pressure is returning. The index might see pressure to drop to support level of 411 points (MA50). In general, the drop on December 3rd showed that the market might return to short-term dropping trend. Therefore, investors should keep a reasonable weight to avoid unexpected risks from the market.

Recommending code: SSI (Take profit) | FPT (Sell) | BID (Cut loss)

Observing code: BSR, IDC, IDJ

(Details in page 2)

RECOMMENDING CODES AS PER TECHNICAL SIGNS

Codes of the day

| No | Ticker | Recommend | Recommended date | Current Price | Operation Price | Current profit/loss | Target Price | Expected profit | Cut loss price | Expected Loss | Note |
|----|--------|-------------|------------------|---------------|-----------------|---------------------|--------------|-----------------|----------------|---------------|----------------------|
| 1 | SSI | Take profit | 06/12/21 | 50.5 | 41.4 | 21.98% | 62.2 | 50.2% | 40 | -3.4% | Weakening sign |
| 2 | BID | Cut loss | 06/11/21 | 42 | 43.6 | -3.67% | 49 | 12.4% | 42 | -3.7% | Touch cut loss level |
| 3 | FPT | Sell | 06/12/21 | 95.5 | 100 | -4.5% | 110 | 10.0% | 95 | -5.0% | Weakening sign |

| No | Ticker | Recommend | Recommended date | Current Price | Resistance | Technical sign |
|----|--------|----------------|------------------|---------------|------------|---|
| 1 | BSR | Observe to buy | 06/12/21 | 20.8 | 24 | Dropping sign is not too bad with smaller candle and vol. + MACD Histogram still increased -> might only drop to retest bottom around 20, good gaining candle with vol. will confirm the success of the retesting |
| 2 | IDC | Observe to buy | 06/12/21 | 77.3 | 88-90 | Correct to MA50 positively with smaller candle and vol. + MACD Histogram increased in 2 recent sessions -> might recover again if dropping further to support level of 70-74 with this sign |
| 3 | IDJ | Observe to buy | 06/12/21 | 55.8 | 67-69 | Correct to MA50 positively with smaller candle and vol. + MACD Histogram increased in 3 recent sessions -> might recover again, need to close > 59 with high vol. to confirm |

List of recommended codes

| No | Ticker | Recommend | Recommended date | Current Price | Operation Price | Current profit/loss | Target Price | Expected profit | Cut loss price | Expected Loss | Note |
|----|--------|-----------|------------------|---------------|-----------------|---------------------|--------------|-----------------|----------------|---------------|------|
| 1 | MSN | Buy | 05/11/21 | 151 | 147.9 | 2.1% | 165 | 11.6% | 140 | -5% | |
| 2 | NTP | Hold | 10/11/21 | 61.6 | 56.9 | 8.3% | 69.3 | 21.8% | 53.8 | -5% | |
| 3 | VCG | Buy | 30/11/21 | 47 | 47.5 | -1.1% | 52.4 | 10% | 45.3 | -5% | |
| 4 | CTG | Buy | 02/12/21 | 33 | 34 | -2.9% | 42.15 | 24% | 32.3 | -5% | |
| 5 | DRC | Buy | 03/12/21 | 34.2 | 35.8 | -4.5% | 40.6 | 13% | 33.9 | -5% | |

DAILY NEWS

Domestic news

FTSE Vietnam Index officially adds DXG, DIG, DGC in the portfolio during Q4 review

FTSE Vietnam Index – benchmark for FTSE Vietnam ETF has released Q4/2021 regular review results.

Accordingly, FTSE Vietnam Index added DXG, DIG, and DGC in this review. On the other hand, it didn't cancel any code. So, the number of code in FTSE Vietnam Index portfolio after the review increased to 26.

On December 1st, FTSE Vietnam ETF portfolio reached 402.5 million USD, in which, 100% investment is on Vietnam stock.

Meanwhile, FTSE Vietnam AllShare Index added DGW, FLC, HDG, HT1, NKG, and ITA. However, there is not yet any big fund using FTSE Vietnam AllShare Index as benchmark.

Agriculture export increased strongly

According to Ministry of Agriculture and Rural Development, in November, agro, forestry, and aqua products export is about 4.2 billion USD, bringing total export value in 11 months to nearly 43.5 billion USD.

Remarkably, many export products recently has been seeing higher volume like: Coffee, rubber, rice, vegetable, pepper, cashew nuts, and cassava. In which, rubber, cashew nuts, cassava and cassava products with higher export volume and value.

America is still Vietnam biggest agro and aqua product importer with over 11.9 billion USD (27.5% market share).

Besides, Vietnam also raised the import of agro, forestry, and aqua products at 39.1 billion USD (up by 39% YoY) so Vietnam export surplus is nearly 4.3 billion USD (down by 56.5% YoY).

Aqua product export is nearly 8 billion USD after 11 months, maintaining the gaining trend until the end of the year

According to general Department of Customs, in November, aqua product export is about 875 million USD, up by 8 billion USD, up by 3.7% YoY.

Shrimp export value in November is nearly 350 million USD, up by 11% MoM. Tra fish also increased by 23% at 178 million USD. Tuna and squid export increased by 48% and 37% MoM to 76 and 69 million USD.

For market, as of the end of November, export to America increased the strongest with nearly 1.87 billion USD, up by 26% YoY.

Source: NDH

Listing Company News

Masan Group raised dividend rate of 2021 to 12%, issuing 20% bonus share

Masan Group (HoSE: MSN) announced to raise 2021 cash dividend to 1,200 dong (12%), higher than 10% approved at the end of May. On July 16th, the group has advanced 2021 first term dividend at 9.5%.

Along with raising cash dividend, Masan Group also approved to issue bonus share at the rate of 5:1 for existed shareholders. Bonus share issuance will raise outstanding share by over 236 million shares, so Masan's total outstanding share will be over 1.4 billion units.

At the end of December, Masan Group and Masan Horizon expect to receive 1,406 billion dong of cash dividend from Masan MEATLife (UPCoM: MML).

Gilimex issues nearly 17 million shares at 35,000 dong/share

Binh Thanh Import Export (Gilimex, HoSE: GIL) released BoM resolution on private issuance. The company expects to issue 16.8 million private shares at the rate of 38.89%, chartered capital is expected to increase from 432 to 600 billion. Issuing time is in 2021 after being approved by SSC. Issuing rate is 35,000 dong/share, collecting about 588 billion.

The company mobilizes to pay debts in banks, suppliers, paying salary and bonus to workers and investing in subsidiary company. Gilimex raises capital in 2 subsidiary companies in real estate section.

After paying 2020 remaining dividend, Phuoc Hoa Rubber closes for advancing 2021 dividend at the rate of 25%

Phuoc Hoa Rubber (PHR) released information on dividend payment. Accordingly, December 17th 2021 is closing date for advancing 2021 cash dividend. Payment rate is 25%. Payment time is June 15th, 2022.

So, with nearly 135.5 million listed and outstanding shares. Phuoc Hoa Rubber will spend about 338 billion dong on this dividend advance.

For business results, in 9 months 2021, Phuoc Hoa Rubber revenue is 1,279 billion, up by 44.4% YoY. However, with no more other profit of 600 billion dong like same period (mainly thanks to project compensation) so EAT reached 340 billion, down by 53% YoY, in which, parent company EAT is 305 billion.

As of September 30th, 2021, Phuoc Hoa Rubber has 477 billion dong on non-distributed EAT. Besides, there is 1,205 billion dong in investment and development fund and 21 billion dong of equity surplus.

Source: NDH

MARKET STATISTICS**Statistics on matching trade****TOP 5 IMPACTING GAINERS**

| HOSE | | | |
|--------|------------------|-------------|-------------|
| Ticker | Closing (VND) | Change % | Impact % |
| DHG | 116,700 | 6.97% | 0.02% |
| HDC | 103,500 | 5.72% | 0.01% |
| PME | 80,200 | 6.93% | 0.01% |
| BAF | 24,000 | 20.00% | 0.01% |
| ROS | 8,060 | 6.90% | 0.01% |

| HNX | | | |
|--------|------------------|-------------|-------------|
| Ticker | Closing (VND) | Change % | Impact % |
| IPA | 67,300 | 5.16% | 0.12% |
| CEO | 43,500 | 3.08% | 0.07% |
| TIG | 22,300 | 9.85% | 0.05% |
| KSF | 72,000 | 0.98% | 0.04% |
| LAS | 24,400 | 4.27% | 0.02% |

TOP 5 IMPACTING DROPPERS

| HOSE | | | |
|--------|------------------|-------------|-------------|
| Ticker | Closing (VND) | Change % | Impact % |
| VHM | 80,200 | -2.55% | -0.16% |
| BID | 42,000 | -4.98% | -0.15% |
| GVR | 36,500 | -5.56% | -0.15% |
| VIC | 105,500 | -1.59% | -0.11% |
| VPB | 35,700 | -3.51% | -0.10% |

| HNX | | | |
|--------|------------------|-------------|-------------|
| Ticker | Closing (VND) | Change % | Impact % |
| SHS | 47,700 | -8.45% | -0.29% |
| MBS | 38,500 | -8.33% | -0.19% |
| THD | 251,500 | -0.51% | -0.09% |
| L14 | 260,000 | -5.93% | -0.09% |
| DTK | 14,800 | -3.90% | -0.08% |

TOP 5 IN MATCHING VOLUME

| HOSE | | | |
|--------|------------------|-------------|-------------------|
| Ticker | Closing (VND) | Change % | Volume (share) |
| ROS | 8,060 | 6.90% | 55,596,900 |
| SSI | 50,500 | -6.48% | 44,930,900 |
| HAG | 8,800 | 0.00% | 38,149,900 |
| HQC | 6,700 | -2.47% | 28,318,600 |
| GEX | 40,950 | -6.93% | 27,724,100 |

| HNX | | | |
|--------|------------------|-------------|-------------------|
| Ticker | Closing (VND) | Change % | Volume (share) |
| SHS | 47,700 | -8.45% | 17,734,634 |
| KLF | 6,400 | 1.59% | 9,295,124 |
| CEO | 43,500 | 3.08% | 7,541,814 |
| HUT | 17,500 | -7.89% | 7,381,672 |
| TVC | 20,900 | -6.28% | 6,849,845 |

TOP 5 IN MATCHING VALUE

| HOSE | | | |
|--------|------------------|-------------|---------------------|
| Ticker | Closing (VND) | Change % | Value (bil. VND) |
| SSI | 50,500 | -6.48% | 2,354.2 |
| GEX | 40,950 | -6.93% | 1,149.5 |
| HPG | 47,700 | -1.85% | 1,049.6 |
| VPB | 35,700 | -3.51% | 855.9 |
| TCB | 50,200 | -2.90% | 800.1 |

| HNX | | | |
|--------|------------------|-------------|---------------------|
| Ticker | Closing (VND) | Change % | Value (bil. VND) |
| SHS | 47,700 | -8.45% | 891.1 |
| CEO | 43,500 | 3.08% | 336.9 |
| APS | 46,000 | -8.00% | 167.7 |
| TVC | 20,900 | -6.28% | 146.2 |
| THD | 251,500 | -0.51% | 144.7 |

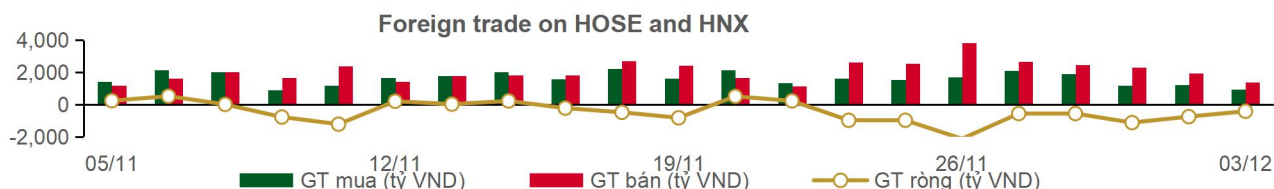
Statistics on agreement trades**TOP 5 IN AGREEMENT TRADES**

| HOSE | | |
|--------|---------------------------|-------------------------------|
| Ticker | Agreement vol. (share) | Agreement value (bil. VND) |
| CRE | 26,059,000 | 839.10 |
| IDI | 12,535,000 | 238.79 |
| GAB | 846,300 | 165.03 |
| SHB | 5,000,000 | 117.75 |
| DBD | 1,319,228 | 70.05 |

| HNX | | |
|--------|---------------------------|-------------------------------|
| Ticker | Agreement vol. (share) | Agreement value (bil. VND) |
| EVS | 853,200 | 35.91 |
| VC2 | 398,000 | 23.36 |
| IDJ | 384,603 | 21.60 |
| PPE | 1,444,560 | 18.78 |
| D11 | 230,000 | 8.97 |

Statistics on foreign investors' trade

| Exchange | Buying vol. (mil. share) | Buying value (bil. VND) | Selling vol. (mil. share) | Selling value (bil. VND) | Net selling/ buying value (mil. share) | Net selling/ buying value (bil. VND) |
|--------------|-----------------------------|----------------------------|------------------------------|-----------------------------|--|--|
| HOSE | 19.75 | 942.13 | 36.09 | 1,359.45 | (16.34) | (417.31) |
| HNX | 0.49 | 15.81 | 0.89 | 17.57 | (0.40) | (1.76) |
| Total | 20.24 | 957.94 | 36.99 | 1,377.02 | (16.74) | (419.07) |



TOP 5 BOUGHT-IN

| HOSE | | | |
|--------|------------------|------------------------|----------------------------|
| Ticker | Closing (VND) | Buying vol. (share) | Buying value (bil. VND) |
| VIC | 105,500 | 983,100 | 105.67 |
| VNM | 85,800 | 1,053,600 | 91.30 |
| VHM | 80,200 | 740,800 | 61.16 |
| HPG | 47,700 | 1,198,500 | 58.37 |
| PNJ | 94,000 | 568,013 | 55.00 |

| HNX | | | |
|--------|------------------|------------------------|----------------------------|
| Ticker | Closing (VND) | Buying vol. (share) | Buying value (bil. VND) |
| PVI | 47,500 | 106,300 | 5.06 |
| IDC | 77,300 | 42,000 | 3.22 |
| NRC | 28,600 | 20,000 | 0.57 |
| PSD | 30,900 | 15,400 | 0.48 |
| ART | 14,400 | 29,600 | 0.43 |

TOP 5 SOLD-OUT

| HOSE | | | |
|--------|------------------|-------------------------|-----------------------------|
| Ticker | Closing (VND) | Selling vol. (share) | Selling value (bil. VND) |
| VRE | 28,100 | 3,342,300 | 97.80 |
| DXG | 31,100 | 2,933,000 | 94.95 |
| HPG | 47,700 | 1,839,400 | 88.78 |
| VNM | 85,800 | 874,800 | 75.86 |
| NLG | 56,800 | 1,009,100 | 58.45 |

| HNX | | | |
|--------|------------------|-------------------------|-----------------------------|
| Ticker | Closing (VND) | Selling vol. (share) | Selling value (bil. VND) |
| HUT | 17,500 | 487,000 | 8.73 |
| SHS | 47,700 | 54,300 | 2.74 |
| BCC | 26,100 | 98,000 | 2.65 |
| TIG | 22,300 | 30,000 | 0.65 |
| ACM | 3,300 | 100,600 | 0.35 |

TOP 5 NET BUYING

| HOSE | | | |
|--------|------------------|---------------------|------------------------|
| Ticker | Closing (VND) | Net vol. (share) | Net value (bil VND) |
| VIC | 105,500 | 482,400 | 51.75 |
| VHM | 80,200 | 624,100 | 51.58 |
| VND | 73,000 | 332,500 | 25.62 |
| DXS | 32,900 | 609,500 | 20.58 |
| CTG | 33,000 | 501,200 | 17.10 |

| HNX | | | |
|--------|------------------|---------------------|------------------------|
| Ticker | Closing (VND) | Net vol. (share) | Net value (bil VND) |
| PVI | 47,500 | 106,300 | 5.06 |
| IDC | 77,300 | 42,000 | 3.22 |
| NRC | 28,600 | 20,000 | 0.57 |
| PSD | 30,900 | 15,400 | 0.48 |
| ART | 14,400 | 29,100 | 0.43 |

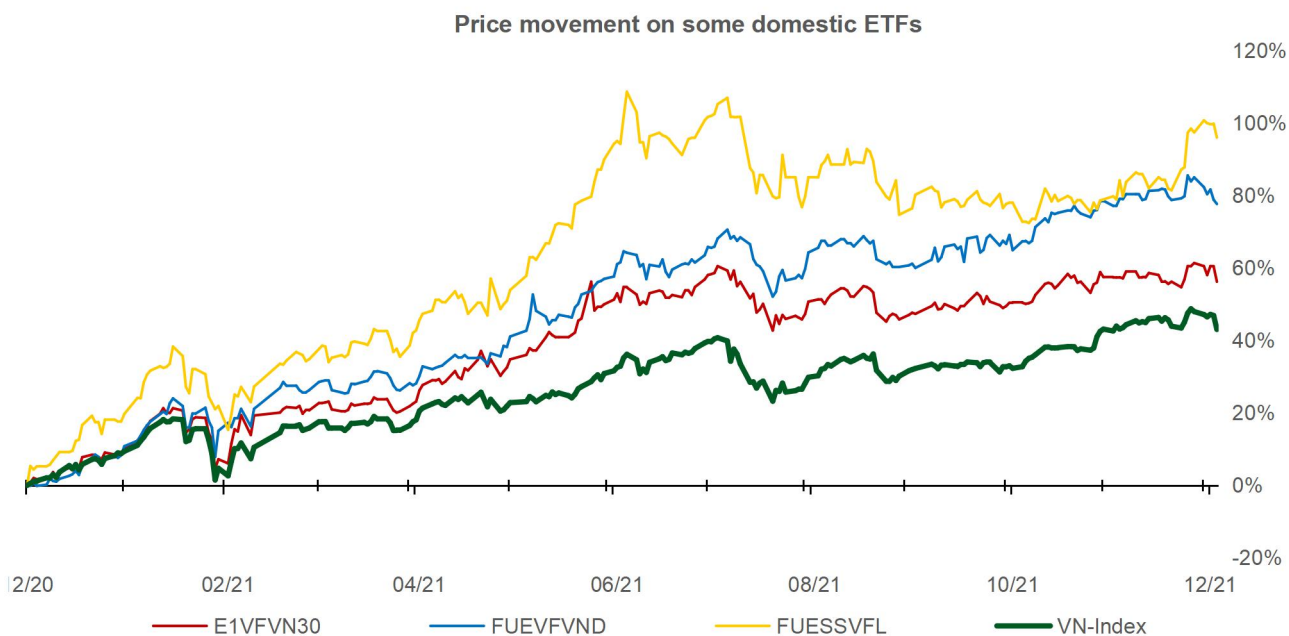
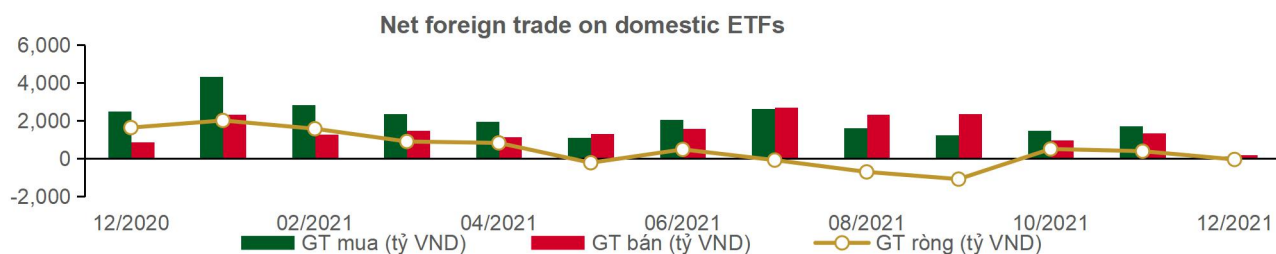
TOP 5 NET SELLING

| HOSE | | | |
|--------|------------------|---------------------|------------------------|
| Ticker | Closing (VND) | Net vol. (share) | Net value (bil VND) |
| DXG | 31,100 | (2,399,000) | (77.45) |
| VRE | 28,100 | (2,617,900) | (76.71) |
| NLG | 56,800 | (1,009,100) | (58.45) |
| GEX | 40,950 | (1,254,600) | (52.19) |
| NVL | 111,000 | (416,700) | (47.80) |

| HNX | | | |
|--------|------------------|---------------------|------------------------|
| Ticker | Closing (VND) | Net vol. (share) | Net value (bil VND) |
| HUT | 17,500 | (486,500) | (8.72) |
| BCC | 26,100 | (97,000) | (2.62) |
| SHS | 47,700 | (47,000) | (2.37) |
| TIG | 22,300 | (30,000) | (0.65) |
| ACM | 3,300 | (89,560) | (0.31) |

Statistics on domestic ETF share trade

| PRICE | | | | | FOREIGN TRADE | | | |
|--------------|----------------|---------------|-------------------|--------------------|---------------|---------------------|----------------------|------------------------|
| Ticker | Closing VND | Change (%) | Volume (share) | Value (bil VND) | Ticker | Buying (bil VND) | Selling (bil VND) | Net value (bil VND) |
| E1VFN30 | 25,500 | -2.6% | 599,500 | 15.50 | E1VFN30 | 9.50 | 2.82 | 6.69 |
| FUEMAV30 | 17,800 | -2.1% | 65,000 | 1.17 | FUEMAV30 | 0.91 | 1.15 | (0.25) |
| FUESSV30 | 19,200 | 0.1% | 108,500 | 2.09 | FUESSV30 | 0.00 | 0.10 | (0.09) |
| FUESSV50 | 23,100 | -1.3% | 31,800 | 0.78 | FUESSV50 | 0.06 | 0.00 | 0.06 |
| FUESSVFL | 22,350 | -1.9% | 132,500 | 2.96 | FUESSVFL | 2.45 | 2.86 | (0.42) |
| FUEVFN30 | 27,580 | -0.6% | 531,900 | 14.78 | FUEVFN30 | 9.34 | 6.16 | 3.18 |
| FUEVN100 | 19,990 | -0.4% | 36,200 | 0.73 | FUEVN100 | 0.64 | 0.60 | 0.04 |
| FUEIP100 | 11,130 | -0.9% | 15,100 | 0.17 | FUEIP100 | 0.00 | 0.00 | 0.00 |
| Total | | | 1,520,500 | 38.17 | Total | 22.90 | 13.68 | 9.22 |



Statistics on guaranteed warrant trade

| Warrant code(*) | Closing rate (VND) | Change (%) | Matched volume | Day to maturity | Price (VND) | Theoretical buying rate (VND) (**) | Difference from closing rate (VND) | Operating price (VND) | Converting rate n:1 | Matured date |
|-----------------|--------------------|------------|----------------|-----------------|-------------|------------------------------------|------------------------------------|-----------------------|---------------------|--------------|
| CACB2101 | 1,250 | -3.1% | 21,440 | 49 | 32,550 | 350 | (900) | 31,400 | 4.0 | 21/01/2022 |
| CACB2102 | 2,320 | -11.5% | 17,690 | 210 | 32,550 | 863 | (1,457) | 35,000 | 2.0 | 01/07/2022 |
| CFPT2102 | 2,000 | -10.3% | 1,370 | 38 | 95,500 | 1,360 | (640) | 89,050 | 4.9 | 10/01/2022 |
| CFPT2103 | 1,400 | -7.3% | 14,580 | 35 | 95,500 | 32 | (1,368) | 98,950 | 4.9 | 07/01/2022 |
| CFPT2105 | 2,840 | -5.3% | 31,660 | 34 | 95,500 | 2,158 | (682) | 85,100 | 4.9 | 06/01/2022 |
| CFPT2106 | 1,440 | -3.4% | 5,630 | 38 | 95,500 | 802 | (638) | 89,300 | 8.0 | 10/01/2022 |
| CFPT2107 | 670 | -14.1% | 21,180 | 54 | 95,500 | 67 | (603) | 98,000 | 12.0 | 26/01/2022 |
| CFPT2108 | 3,260 | -0.6% | 50 | 215 | 95,500 | 511 | (2,749) | 106,830 | 6.0 | 06/07/2022 |
| CFPT2109 | 1,560 | -2.5% | 134,620 | 126 | 95,500 | 496 | (1,064) | 96,000 | 8.0 | 08/04/2022 |
| CFPT2110 | 1,400 | -9.7% | 3,750 | 88 | 95,500 | 69 | (1,331) | 105,000 | 5.0 | 01/03/2022 |
| CHDB2103 | 1,030 | 0.0% | 20,600 | 145 | 31,000 | 391 | (639) | 28,890 | 8.0 | 27/04/2022 |
| CHPG2109 | 1,520 | -20.8% | 10,600 | 38 | 47,700 | 0 | (1,520) | 55,000 | 1.0 | 10/01/2022 |
| CHPG2111 | 770 | -21.4% | 187,940 | 34 | 47,700 | 107 | (663) | 48,000 | 5.0 | 06/01/2022 |
| CHPG2112 | 600 | -13.0% | 10,960 | 24 | 47,700 | 16 | (584) | 48,900 | 6.0 | 27/12/2021 |
| CHPG2113 | 1,790 | -3.2% | 6,790 | 94 | 47,700 | 144 | (1,646) | 51,500 | 4.0 | 07/03/2022 |
| CHPG2114 | 720 | -8.9% | 21,730 | 145 | 47,700 | 45 | (675) | 56,790 | 10.0 | 27/04/2022 |
| CHPG2115 | 600 | -11.8% | 41,180 | 54 | 47,700 | 0 | (600) | 56,000 | 5.0 | 26/01/2022 |
| CHPG2116 | 1,810 | -3.7% | 7,280 | 215 | 47,700 | 183 | (1,627) | 61,410 | 4.0 | 06/07/2022 |
| CHPG2117 | 1,050 | -6.3% | 94,860 | 210 | 47,700 | 167 | (883) | 60,000 | 5.0 | 01/07/2022 |
| CHPG2118 | 1,070 | 0.0% | 11,580 | 152 | 47,700 | 30 | (1,040) | 62,000 | 5.0 | 04/05/2022 |
| CKDH2104 | 2,370 | -4.1% | 18,520 | 47 | 46,050 | 1,140 | (1,230) | 44,000 | 2.0 | 19/01/2022 |
| CKDH2105 | 2,170 | -3.6% | 3,400 | 24 | 46,050 | 2,126 | (44) | 37,600 | 4.0 | 27/12/2021 |
| CKDH2106 | 2,870 | -0.7% | 580 | 69 | 46,050 | 249 | (2,621) | 49,000 | 1.0 | 10/02/2022 |
| CKDH2107 | 1,130 | -1.7% | 12,850 | 145 | 46,050 | 468 | (662) | 43,890 | 8.0 | 27/04/2022 |
| CMBB2103 | 600 | -4.8% | 14,470 | 35 | 28,300 | 0 | (600) | 34,810 | 1.5 | 07/01/2022 |
| CMBB2104 | 770 | -10.5% | 47,100 | 47 | 28,300 | 1 | (769) | 32,000 | 2.0 | 19/01/2022 |
| CMBB2105 | 750 | -3.9% | 10,980 | 69 | 28,300 | 0 | (750) | 36,000 | 1.0 | 10/02/2022 |
| CMBB2106 | 490 | -5.8% | 4,700 | 54 | 28,300 | 0 | (490) | 34,000 | 4.0 | 26/01/2022 |
| CMBB2107 | 1,940 | -3.0% | 160,650 | 126 | 28,300 | 409 | (1,531) | 30,000 | 2.0 | 08/04/2022 |
| CMBB2108 | 1,300 | -11.0% | 80,920 | 88 | 28,300 | 207 | (1,093) | 30,000 | 2.0 | 01/03/2022 |
| CMBB2109 | 800 | -10.1% | 4,810 | 152 | 28,300 | 87 | (713) | 32,790 | 5.0 | 04/05/2022 |
| CMSN2104 | 4,950 | 0.0% | 10,810 | 152 | 151,000 | 3,455 | (1,495) | 118,000 | 10.0 | 04/05/2022 |
| CMSN2105 | 5,000 | 0.0% | 64,350 | 34 | 151,000 | 4,652 | (348) | 128,000 | 5.0 | 06/01/2022 |
| CMSN2107 | 3,100 | -5.2% | 50 | 101 | 151,000 | 1,454 | (1,646) | 150,000 | 5.0 | 14/03/2022 |
| CMSN2108 | 1,100 | 1.9% | 84,490 | 145 | 151,000 | 300 | (800) | 160,000 | 20.0 | 27/04/2022 |
| CMSN2109 | 1,540 | -13.5% | 2,000 | 69 | 151,000 | 428 | (1,112) | 150,000 | 12.0 | 10/02/2022 |
| CMSN2110 | 2,380 | -2.1% | 7,500 | 126 | 151,000 | 1,369 | (1,011) | 142,000 | 10.0 | 08/04/2022 |
| CMWG2104 | 7,350 | -4.6% | 6,300 | 109 | 133,500 | 6,725 | (625) | 89,700 | 6.6 | 22/03/2022 |
| CMWG2106 | 2,080 | -35.2% | 690 | 35 | 133,500 | 2,144 | 64 | 119,600 | 6.6 | 07/01/2022 |
| CMWG2107 | 7,890 | -10.7% | 38,880 | 34 | 133,500 | 7,301 | (589) | 109,630 | 3.3 | 06/01/2022 |
| CMWG2108 | 3,600 | -18.2% | 470 | 101 | 133,500 | 1,991 | (1,609) | 126,000 | 5.0 | 14/03/2022 |
| CMWG2109 | 7,600 | -7.8% | 2,060 | 69 | 133,500 | 6,371 | (1,229) | 112,950 | 3.3 | 10/02/2022 |
| CMWG2110 | 1,200 | -17.2% | 5,120 | 54 | 133,500 | 358 | (842) | 131,000 | 12.0 | 26/01/2022 |
| CMWG2111 | 1,980 | -5.7% | 38,530 | 126 | 133,500 | 848 | (1,132) | 130,000 | 10.0 | 08/04/2022 |
| CMWG2112 | 2,520 | -9.0% | 14,540 | 88 | 133,500 | 409 | (2,111) | 140,000 | 5.0 | 01/03/2022 |
| CNVL2103 | 2,530 | -11.5% | 8,880 | 47 | 111,000 | 1,286 | (1,244) | 105,000 | 5.0 | 19/01/2022 |
| CNVL2104 | 1,050 | -9.5% | 7,240 | 145 | 111,000 | 352 | (698) | 108,890 | 20.0 | 27/04/2022 |
| CPDR2103 | 1,180 | 0.0% | 109,590 | 145 | 94,900 | 583 | (597) | 88,890 | 16.0 | 27/04/2022 |
| CPNJ2104 | 580 | -7.9% | 10,320 | 35 | 94,000 | 0 | (580) | 109,000 | 8.0 | 07/01/2022 |
| CPNJ2105 | 1,140 | -19.2% | 52,230 | 34 | 94,000 | 147 | (993) | 95,000 | 5.0 | 06/01/2022 |
| CPNJ2106 | 2,500 | 0.0% | 230 | 101 | 94,000 | 373 | (2,127) | 98,000 | 5.0 | 14/03/2022 |
| CPNJ2107 | 890 | 2.3% | 360 | 69 | 94,000 | 2 | (888) | 110,000 | 5.0 | 10/02/2022 |
| CPNJ2108 | 900 | 5.9% | 13,960 | 69 | 94,000 | 84 | (816) | 97,000 | 14.0 | 10/02/2022 |
| CPNJ2109 | 600 | -7.7% | 50,160 | 152 | 94,000 | 39 | (561) | 108,890 | 25.0 | 04/05/2022 |

| | | | | | | | | | | |
|----------|-------|--------|---------|-----|---------|-------|---------|---------|------|------------|
| CSTB2105 | 1,800 | -5.8% | 11,620 | 38 | 28,000 | 35 | (1,765) | 30,000 | 1.0 | 10/01/2022 |
| CSTB2107 | 600 | -23.1% | 65,800 | 47 | 28,000 | 2 | (598) | 32,000 | 2.0 | 19/01/2022 |
| CSTB2108 | 420 | -16.0% | 11,790 | 7 | 28,000 | 24 | (396) | 28,000 | 4.0 | 10/12/2021 |
| CSTB2109 | 1,900 | -11.2% | 76,400 | 94 | 28,000 | 433 | (1,467) | 29,000 | 2.0 | 07/03/2022 |
| CSTB2110 | 590 | -10.6% | 59,810 | 145 | 28,000 | 150 | (440) | 30,000 | 8.0 | 27/04/2022 |
| CSTB2111 | 560 | -40.4% | 56,350 | 69 | 28,000 | 91 | (469) | 30,000 | 3.0 | 10/02/2022 |
| CTCB2105 | 3,150 | -3.1% | 20,750 | 152 | 50,200 | 1,310 | (1,840) | 45,000 | 5.0 | 04/05/2022 |
| CTCB2106 | 680 | -12.8% | 30,680 | 47 | 50,200 | 6 | (674) | 55,000 | 5.0 | 19/01/2022 |
| CTCB2107 | 1,070 | -14.4% | 3,110 | 24 | 50,200 | 396 | (674) | 47,500 | 7.0 | 27/12/2021 |
| CTCB2108 | 3,800 | -2.6% | 1,140 | 101 | 50,200 | 227 | (3,573) | 58,000 | 1.0 | 14/03/2022 |
| CTCB2109 | 2,300 | -4.6% | 21,660 | 94 | 50,200 | 539 | (1,761) | 50,000 | 4.0 | 07/03/2022 |
| CTCB2110 | 600 | -26.8% | 45,930 | 69 | 50,200 | 45 | (555) | 54,000 | 7.0 | 10/02/2022 |
| CTCB2111 | 1,840 | -3.7% | 3,000 | 124 | 50,200 | 182 | (1,658) | 56,350 | 4.0 | 06/04/2022 |
| CTCB2112 | 1,500 | -6.8% | 60,310 | 210 | 50,200 | 543 | (957) | 55,000 | 5.0 | 01/07/2022 |
| CVHM2107 | 1,230 | -11.5% | 76,310 | 34 | 80,200 | 30 | (1,200) | 83,480 | 3.8 | 06/01/2022 |
| CVHM2108 | 500 | 0.0% | 5,080 | 24 | 80,200 | 0 | (500) | 84,990 | 9.1 | 27/12/2021 |
| CVHM2109 | 610 | -1.6% | 33,670 | 69 | 80,200 | 0 | (610) | 98,650 | 3.8 | 10/02/2022 |
| CVHM2110 | 1,400 | 1.5% | 50,420 | 94 | 80,200 | 142 | (1,258) | 84,990 | 7.6 | 07/03/2022 |
| CVHM2111 | 700 | -2.8% | 37,150 | 145 | 80,200 | 72 | (628) | 88,890 | 20.0 | 27/04/2022 |
| CVHM2112 | 1,020 | 0.0% | 25,240 | 69 | 80,200 | 71 | (949) | 84,000 | 10.0 | 10/02/2022 |
| CVHM2113 | 2,220 | -3.9% | 17,290 | 210 | 80,200 | 567 | (1,653) | 90,000 | 5.0 | 01/07/2022 |
| CVHM2114 | 830 | -1.2% | 16,230 | 152 | 80,200 | 86 | (744) | 90,000 | 16.0 | 04/05/2022 |
| CVIC2104 | 850 | -1.2% | 78,480 | 35 | 105,500 | 14 | (836) | 110,210 | 8.9 | 07/01/2022 |
| CVIC2105 | 1,340 | -5.6% | 123,970 | 34 | 105,500 | 188 | (1,152) | 106,670 | 4.4 | 06/01/2022 |
| CVIC2106 | 1,060 | -2.8% | 98,830 | 145 | 105,500 | 486 | (574) | 98,890 | 20.0 | 27/04/2022 |
| CVIC2107 | 2,500 | -12.3% | 36,190 | 126 | 105,500 | 1,379 | (1,121) | 93,000 | 10.0 | 08/04/2022 |
| CVIC2108 | 1,250 | -7.4% | 43,990 | 152 | 105,500 | 576 | (674) | 100,000 | 16.0 | 04/05/2022 |
| CVJC2101 | 1,390 | -4.1% | 24,220 | 34 | 120,400 | 291 | (1,099) | 120,000 | 5.0 | 06/01/2022 |
| CVJC2103 | 710 | -5.3% | 32,310 | 145 | 120,400 | 89 | (621) | 130,000 | 20.0 | 27/04/2022 |
| CVNM2106 | 400 | -13.0% | 11,070 | 41 | 85,800 | 0 | (400) | 98,300 | 4.9 | 13/01/2022 |
| CVNM2107 | 340 | -22.7% | 51,160 | 35 | 85,800 | 0 | (340) | 96,330 | 9.8 | 07/01/2022 |
| CVNM2109 | 680 | -6.9% | 23,000 | 34 | 85,800 | 0 | (680) | 93,390 | 4.9 | 06/01/2022 |
| CVNM2110 | 530 | -8.6% | 28,710 | 38 | 85,800 | 2 | (528) | 90,240 | 9.8 | 10/01/2022 |
| CVNM2111 | 810 | -2.4% | 11,130 | 145 | 85,800 | 15 | (795) | 98,890 | 20.0 | 27/04/2022 |
| CVNM2112 | 1,300 | -0.8% | 11,120 | 126 | 85,800 | 93 | (1,207) | 93,000 | 8.0 | 08/04/2022 |
| CVNM2113 | 690 | -6.8% | 98,930 | 152 | 85,800 | 37 | (653) | 96,790 | 16.0 | 04/05/2022 |
| CVPB2106 | 1,700 | -2.9% | 33,310 | 47 | 35,700 | 197 | (1,503) | 36,090 | 2.8 | 19/01/2022 |
| CVPB2107 | 4,360 | -2.9% | 4,560 | 101 | 35,700 | 299 | (4,061) | 41,080 | 0.6 | 14/03/2022 |
| CVPB2108 | 2,320 | -4.1% | 53,250 | 94 | 35,700 | 505 | (1,815) | 35,810 | 2.8 | 07/03/2022 |
| CVPB2109 | 450 | -27.4% | 84,120 | 54 | 35,700 | 1 | (449) | 41,110 | 3.9 | 26/01/2022 |
| CVPB2110 | 2,200 | -10.2% | 2,730 | 124 | 35,700 | 184 | (2,016) | 40,830 | 2.2 | 06/04/2022 |
| CVRE2105 | 1,000 | -11.5% | 112,860 | 152 | 28,100 | 213 | (787) | 30,000 | 5.0 | 04/05/2022 |
| CVRE2106 | 1,450 | -15.2% | 124,590 | 34 | 28,100 | 232 | (1,218) | 28,000 | 2.0 | 06/01/2022 |
| CVRE2108 | 710 | -6.6% | 11,440 | 24 | 28,100 | 40 | (670) | 28,400 | 4.0 | 27/12/2021 |
| CVRE2109 | 1,180 | -7.8% | 61,850 | 94 | 28,100 | 185 | (995) | 29,000 | 4.0 | 07/03/2022 |
| CVRE2110 | 680 | -2.9% | 13,950 | 145 | 28,100 | 123 | (557) | 30,000 | 8.0 | 27/04/2022 |
| CVRE2111 | 640 | -7.3% | 19,430 | 54 | 28,100 | 1 | (639) | 32,000 | 4.0 | 26/01/2022 |
| CVRE2112 | 940 | -19.7% | 73,460 | 88 | 28,100 | 47 | (893) | 32,000 | 2.0 | 01/03/2022 |
| CVRE2113 | 700 | -6.7% | 8,890 | 152 | 28,100 | 46 | (654) | 35,000 | 4.0 | 04/05/2022 |

(*) All warrants are bought and operated in Euro model and payment method is in cash

(**) PHS evaluates in Black-Scholes model

LIST OF CODES ANALYZED

| Ticker | Exchange | Market price | Reasonable price * | Report date | EAT 2021F (bil VND) | EPS 2021F | BV 2021F | ROE 2021F | ROA 2021F | PE 2021F | PB 2021F |
|---------------------|-------------|--------------|--------------------|-------------|---------------------|-----------|----------|-----------|-----------|----------|----------|
| HPG | (New) HOSE | 47,700 | 59,100 | 01/12/2021 | 25,082 | 5,593 | 24,422 | 23% | 12% | 10.6 | 2.4 |
| SBT | (New) HOSE | 23,650 | 34,400 | 01/12/2021 | 19,104 | 1,352 | 14,463 | 9% | 4% | 25.5 | 2.4 |
| DHG | (New) HOSE | 116,700 | 115,500 | 29/11/2021 | 834 | 6,381 | 31,177 | 21% | 16% | 18.1 | 3.7 |
| MWG | (New) HOSE | 133,500 | 165,800 | 21/11/2021 | 7,475 | 10,483 | 38,936 | 23% | 13% | 7.5 | 2.4 |
| MPC | (New) UPCOM | 46,782 | 54,300 | 19/11/2021 | 997 | 4,983 | 30,783 | 16% | 10% | 10.9 | 1.8 |
| LHG | HOSE | 49,600 | 90,000 | 18/11/2021 | 599 | 11,967 | 37,191 | 23% | 13% | 7.5 | 2.4 |
| PNJ | HOSE | 94,000 | 128,600 | 17/11/2021 | 1,663 | 7,312 | 30,005 | 24% | 16% | 18.3 | 4.5 |
| VNM | HOSE | 85,800 | 111,000 | 15/11/2021 | 11,426 | 5,419 | 18,148 | 30% | 21% | 21.0 | 6.3 |
| STK | HOSE | 66,000 | 61,500 | 12/11/2021 | 302 | 3,581 | 17,988 | 20% | 12% | 17.2 | 3.2 |
| FPT | HOSE | 95,500 | 166,900 | 11/11/2021 | 6,053 | 4,669 | 23,049 | 25% | 11% | 35.8 | 7.2 |
| MSB | HOSE | 25,000 | 29,000 | 10/11/2021 | 4,850 | 3,175 | 19,505 | 18% | 2% | 9.1 | 1.5 |
| NLG | HOSE | 56,800 | 64,800 | 10/11/2021 | 1,550 | 4,493 | 29,015 | 11% | 5% | 14.4 | 2.2 |
| TCM | HOSE | 74,800 | 78,000 | 05/11/2021 | 284 | 4,581 | 30,580 | 15% | 8% | 17.6 | 2.6 |
| DGW | HOSE | 123,600 | 140,600 | 05/11/2021 | 705 | 7,979 | 25,228 | 32% | 14% | 18.2 | 5.8 |
| HII | HOSE | 19,400 | 30,500 | 27/10/2021 | 232 | 6,060 | 17,409 | 28% | 8% | 6.4 | 2.2 |
| LTG | UPCOM | 37,940 | 52,800 | 18/10/2021 | 938 | 11,596 | 48,661 | 20% | 7% | 5.9 | 1.4 |
| OCB | HOSE | 27,500 | 31,100 | 18/10/2021 | 4,630 | 3,204 | 20,522 | 17% | 2% | 9.7 | 1.5 |
| VRE | HOSE | 28,100 | 39,900 | 15/10/2021 | 1,942 | 882 | 13,430 | 6% | 5% | 45.2 | 3.0 |
| NTL | HOSE | 39,900 | 42,600 | 11/10/2021 | 252 | 4,131 | 20,721 | 21% | 14% | 10.3 | 2.1 |
| CTD | HOSE | 77,000 | 72,800 | 08/10/2021 | 411 | 5,490 | 112,414 | 5% | 2% | 13.3 | 0.7 |
| GVR | HOSE | 36,500 | 40,200 | 05/10/2021 | 4,492 | 995 | 13,064 | 9% | 6% | 42.1 | 3.1 |
| LPB | HOSE | 21,550 | 26,100 | 04/10/2021 | 2,508 | 1,597 | 13,818 | 14% | 1% | 16.4 | 1.9 |
| PET | HOSE | 30,000 | 35,000 | 30/09/2021 | 303 | 3,253 | 19,496 | 15% | 4% | 12.9 | 2.2 |
| GMD | HOSE | 49,000 | 54,800 | 24/09/2021 | 599 | 1,759 | 22,276 | 9% | 6% | 30.5 | 2.4 |
| DPG | HOSE | 84,900 | 55,100 | 23/09/2021 | 460 | 6,652 | 31,689 | 23% | 9% | 8.3 | 1.7 |
| VHM | HOSE | 80,200 | 104,200 | 21/09/2021 | 33,314 | 7,651 | 27,512 | 32% | 11% | 13.6 | 3.8 |
| QNS | UPCOM | 52,610 | 53,700 | 17/09/2021 | 1,143 | 3,202 | 22,609 | 13% | 9% | 18.1 | 2.6 |
| TNG | HNX | 30,900 | 29,200 | 15/09/2021 | 182 | 2,455 | 17,560 | 14% | 4% | 11.9 | 1.7 |
| KDH | HOSE | 46,050 | 45,300 | 01/09/2021 | 1,174 | 1,825 | 14,083 | 14% | 8% | 24.8 | 3.2 |
| MSN | HOSE | 151,000 | 171,800 | 25/08/2021 | 7,375 | 6,059 | 20,833 | 21% | 5% | 28.4 | 8.3 |
| FMC | HOSE | 54,000 | 46,400 | 20/08/2021 | 220 | 3,745 | 22,794 | 16% | 11% | 12.4 | 2.0 |
| ANV | HOSE | 35,000 | 27,700 | 16/08/2021 | 222 | 1,739 | 18,043 | 9% | 4% | 15.9 | 1.5 |
| VIB | HOSE | 42,400 | 45,700 | 12/08/2021 | 5,298 | 3,411 | 17,841 | 23% | 2% | 13.4 | 2.6 |
| SZC | HOSE | 58,600 | 45,800 | 26/07/2021 | 254 | 2,543 | 13,930 | 18% | 4% | 18.0 | 3.3 |
| KDC | HOSE | 56,200 | 74,000 | 23/07/2021 | 594 | 2,169 | 33,140 | 8% | 4% | 34.1 | 2.8 |
| VHC | HOSE | 61,500 | 49,500 | 22/07/2021 | 820 | 4,471 | 30,346 | 15% | 11% | 11.1 | 1.6 |
| FRT | HOSE | 62,000 | 39,000 | 21/07/2021 | 86 | 1,086 | 15,486 | 7% | 1% | 35.9 | 2.5 |
| PVI | HNX | 47,500 | 39,777 | 16/07/2021 | 928 | 3,964 | 32,723 | 12% | 4% | 10.0 | 1.2 |
| BMI | HOSE | 44,000 | 42,800 | 13/07/2021 | 310 | 3,395 | 26,601 | 13% | 5% | 12.6 | 1.6 |
| DXG | HOSE | 31,100 | 32,300 | 09/07/2021 | 1,390 | 1,727 | 14,784 | 13% | 5% | 18.7 | 2.1 |
| DHC | HOSE | 91,300 | 109,000 | 08/07/2021 | 497 | 8,868 | 31,698 | 28% | 18% | 12.3 | 3.4 |
| TPB | HOSE | 47,000 | 42,600 | 25/06/2021 | 4,546 | 3,880 | 19,024 | 23% | 2% | 11.0 | 2.2 |
| AAA | HOSE | 16,900 | 21,500 | 07/06/2021 | 413 | 1,739 | 17,474 | 11% | 5% | 10.2 | 1.0 |
| PHR | HOSE | 68,300 | 67,600 | 28/05/2021 | 1,146 | 8,158 | 20,173 | 32% | 16% | 6.6 | 2.1 |
| KBC | HOSE | 51,100 | 47,200 | 28/05/2021 | 1,682 | 3,251 | 25,883 | 14% | 6% | 14.5 | 1.5 |
| REE | HOSE | 67,500 | 62,100 | 28/05/2021 | 1,937 | 5,984 | 45,456 | 14% | 9% | 10.4 | 1.4 |
| IMP | HOSE | 75,100 | 63,700 | 27/05/2021 | 241 | 3,611 | 27,902 | 13% | 11% | 17.7 | 2.3 |
| SAB | HOSE | 157,000 | 182,900 | 26/05/2021 | 4,985 | 7,369 | 36,116 | 21% | 17% | 26.6 | 5.1 |
| NVL | HOSE | 111,000 | 104,600 | 13/05/2021 | 4,369 | 4,389 | 29,673 | 13% | 3% | 23.8 | 3.5 |
| VGG | UPCOM | 45,160 | 55,500 | 13/05/2021 | 187 | 4,249 | 41,384 | 10% | 4% | 13.1 | 1.3 |
| VCB | HOSE | 98,000 | 118,300 | 10/05/2021 | 22,986 | 6,198 | 32,887 | 21% | 2% | 19.1 | 3.6 |
| ACB | HOSE | 32,550 | 39,800 | 10/05/2021 | 9,253 | 4,281 | 21,066 | 24% | 2% | 7.6 | 1.4 |
| TCB | HOSE | 50,200 | 51,300 | 10/05/2021 | 15,741 | 4,497 | 25,278 | 19% | 3% | 11.4 | 2.0 |

| Ticker | Exchange | Market price | Reasonable price * | Report date | EAT 2021F (bil VND) | EPS 2021F | BV 2021F | ROE 2021F | ROA 2021F | PE 2021F | PB 2021F |
|---------------------|----------|--------------|--------------------|-------------|---------------------|-----------|----------|-----------|-----------|----------|----------|
| GEG | HOSE | 19,900 | 21,200 | 07/05/2021 | 388 | 1,273 | 12,788 | 10% | 4% | 16.8 | 1.7 |
| BMP | HOSE | 58,000 | 66,900 | 06/05/2021 | 551 | 6,735 | 32,184 | 21% | 17% | 9.9 | 2.1 |
| VGS | HNX | 43,600 | 24,600 | 13/04/2021 | 171 | 3,623 | 25,974 | 20% | 5% | 7.5 | 1.4 |
| SMC | HOSE | 44,300 | 37,200 | 13/04/2021 | 313 | 4,961 | 17,978 | 20% | 8% | 6.8 | 1.4 |
| ACV | UPCOM | 80,614 | 85,600 | 09/04/2021 | 3,027 | 1,390 | 17,759 | 8% | 5% | 60.6 | 4.7 |
| PLX | HOSE | 53,300 | 64,800 | 31/03/2021 | 4,563 | 3,668 | 17,545 | 18% | 7% | 17.7 | 3.7 |
| GAS | HOSE | 96,600 | 102,000 | 05/03/2021 | 10,892 | 5,691 | 27,913 | 20% | 15% | 18.0 | 3.7 |
| MSH | HOSE | 94,000 | 56,300 | 03/03/2021 | 336 | 6,721 | 30,835 | 22% | 12% | 8.4 | 1.8 |
| GIL | HOSE | 65,400 | 54,800 | 05/02/2021 | 317 | 8,813 | 43,186 | 20% | 10% | 6.2 | 1.3 |
| BSR | UPCOM | 21,143 | 12,900 | 05/02/2021 | 1,337 | 431 | 10,444 | 4% | 2% | 29.9 | 1.2 |
| GTN | HOSE | 20,500 | 36,290 | 29/01/2021 | 303 | 621 | 16,074 | 7% | 8% | 58.4 | 2.3 |
| CTR | UPCOM | 82,630 | 78,800 | 19/01/2021 | 223 | 3,172 | 14,460 | 23% | 6% | 21.1 | 4.6 |
| POW | HOSE | 13,550 | 14,700 | 19/01/2021 | 2,837 | 1,055 | 14,071 | 9% | 5% | 13.9 | 1.0 |

Source: PHFM

* No dividend adjusted reasonable price on report date

Analyst Certification

The report is made by Pham Quang Chuong, analyst – Phu Hung Fund Management Joint Stock Company. Each research analyst(s), strategist(s) or research associate(s) responsible for the preparation and content of all or any identified portion of this research report hereby certifies that, with respect to each issuer or security or any identified portion of the report with respect to each issuer or security that the research analyst, strategist or research associate covers in this research report, all of the views expressed by that research analyst, strategist or research associate in this research report accurately reflect their personal views about those issuer(s) or securities. Each research analyst(s), strategist(s) or research associate(s) also certify that no part of their compensation was, is, or will be, directly or indirectly, related to the specific recommendation(s) or view(s) expressed by that research analyst, strategist or research associate in this research report.

Ratings Definition

Buy = higher than domestic market by over 10%

Hold = similar to domestic market at the rate of +10% ~ -10%

Sell = lower than domestic market by below 10%

No rating = the code is not rated in Phu Hung or not yet listed

The performance is determined by total recollection in 12 months (including dividend).

Analyst Certification

This information has been compiled from sources we believe to be reliable, but we do not hold ourselves responsible for its completeness or accuracy. It is not an offer to sell or solicitation of an offer to buy any securities. Phu Hung Securities and its affiliates and their officers and employees may or may not have a position in or with respect to the securities mentioned herein. Phu Hung Securities (or one of its affiliates) may from time to time perform investment banking or other services or solicit investment banking or other business for any company mentioned in this report. All opinions and estimates included in this report constitute our judgment as of this date and are subject to change without notice.

© Phu Hung Fund Management Joint Stock Company

21st Floor, Phu My Hung Building, 08 Hoang Van Thai St, Tan Phu Ward. District 7, HCM.

Phone: (84-28) 5413 7991

Web: www.phfm.vn